

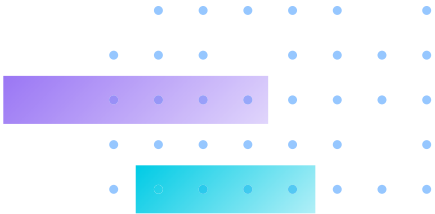
# VIVOCAM L2 Series

## VIVOCAM L2 Managed PoE Switch

---

- Topology View, Floor View, Map View
- Traffic Monitor
- Device List
- DHCP Server
- Non-Stop PoE
- 802.3 af/at/bt Hybrid, bt PoE Port Max. 90W
- Extended PoE Mode up to 250M





# Highlight Features

Devices List

Auto-refresh

Show  entries

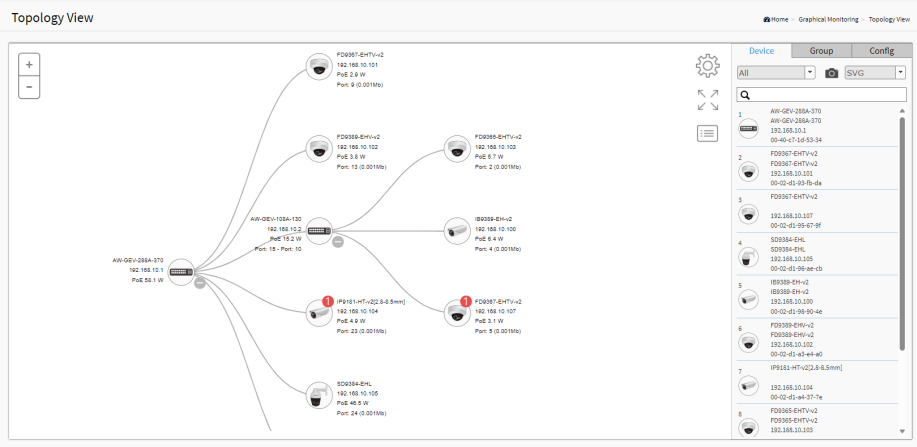
Remove	Status	Device Type	Model Name	Device Name	MAC	IP Address
<input type="checkbox"/>	Online	IP Camera	FE8174	Mega-Pixel Network Camera	00-02-D1-2A-51-2B	192.168.40.80
<input type="checkbox"/>	Online	IP Camera	FD8154V	Mega-Pixel Network Camera	00-02-D1-30-D6-4E	192.168.40.83
<input type="checkbox"/>	Online	IP Camera	IP8364	Mega-Pixel Network Camera	00-02-D1-22-97-35	192.168.40.85
<input type="checkbox"/>	Online	IP Camera	FD8182-F2	Mega-Pixel Network Camera	00-02-D1-38-F3-8D	192.168.40.86
<input type="checkbox"/>	Online	IP Camera	FD8362E	Mega-Pixel Network Camera	00-02-D1-21-29-05	192.168.40.88
<input type="checkbox"/>	Online	IP Camera	IB8338-H	IB8338-H	00-02-D1-2F-99-81	192.168.40.89
<input type="checkbox"/>	Online	IP Camera	FD8173-H	Mega-Pixel Network Camer	00-02-D1-30-5B-9F	192.168.40.94
<input type="checkbox"/>	Online	IP Camera	CC8130	Mega-Pixel Network Camer	00-02-D1-1D-21-83	192.168.40.95
<input type="checkbox"/>	Online	IP Camera	IP8335H	Mega-Pixel Network Camera	00-02-D1-25-33-E7	192.168.40.96
<input type="checkbox"/>	Online	IP Camera	I29361-EH	I29361-EH	00-02-D1-43-E6-52	192.168.40.97

Showing 41 to 50 of 217 entries

Previous 1 ... 4 **5** ... 22 Next

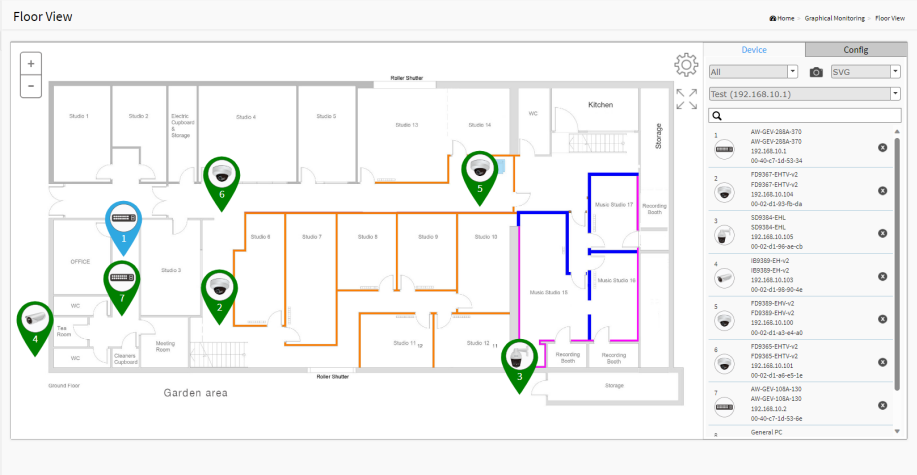
## Auto Discovery

The VIVOCAM L2 series can automatically discover VIVOTEK's devices, such as network cameras, video servers, and NVRs, with a simple click of the mouse.



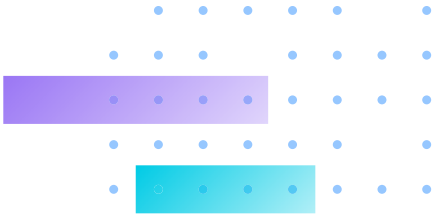
## Topology View

Auto-generated Topology View allows administrators to quickly view and export a complete network topology in SVG/PNG/PDF format for easier inspection and planning.

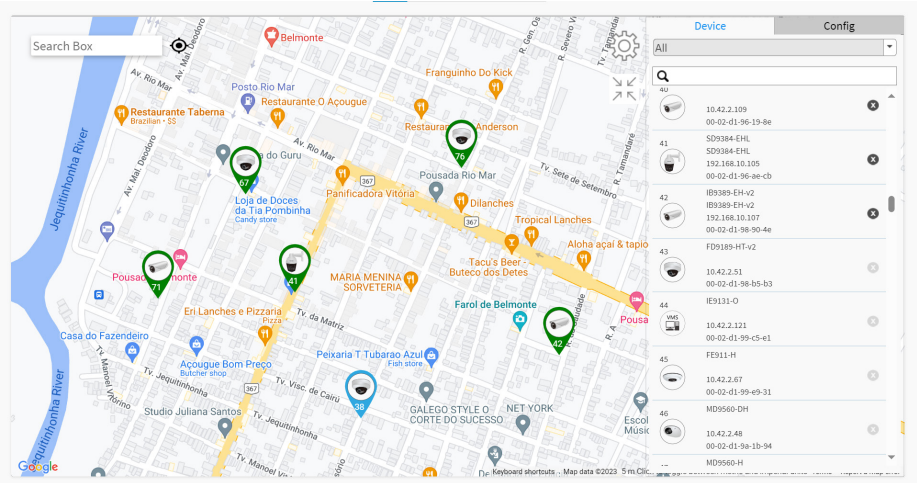


## Floor View

Upload custom floor images. Floor View allows for quick location of deployed surveillance devices and exporting this view in SVG/PNG/PDF format for easier inspection and planning.

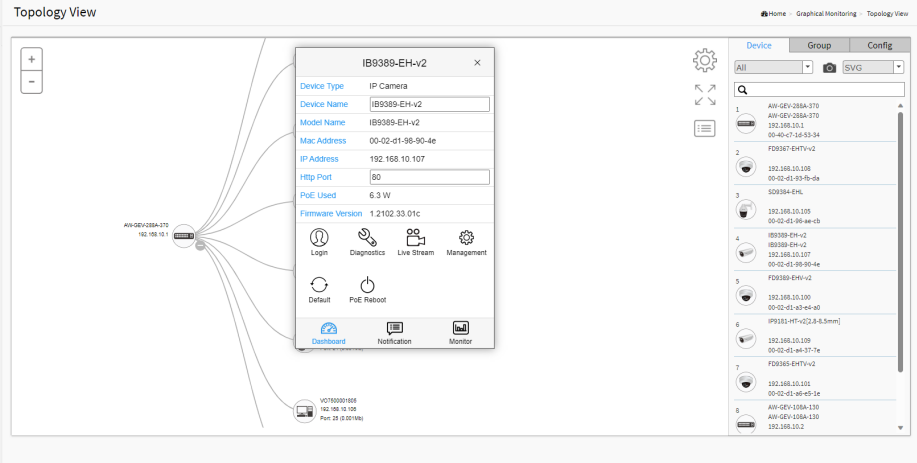


# Highlight Features



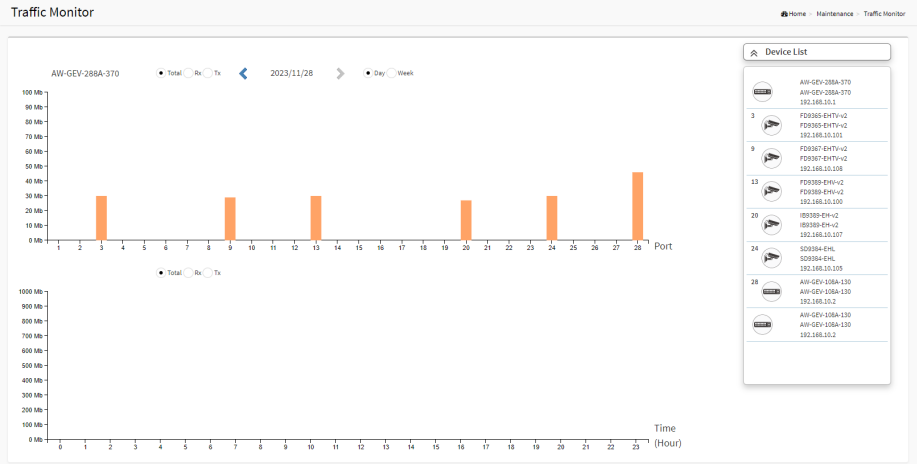
## Google Map View

Locate surveillance devices on Google Maps to simplify multi-site management of any large-scale deployments.



## Device Management

Easy network configuration, open camera Web UI, diagnose camera connection and cable status, display camera live stream, change camera network setting, restore default, PoE consumption, and PoE on/off control.



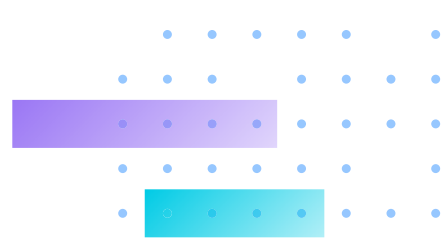
## Traffic Monitor

An auto-generated comprehensive chart shows port-by-port network traffic status.

# Technical Specifications



Model	AW-GEV-108A-130	AW-GEV-288A-370
Short Highlight	8xGbE PoE + 2xGbE Combo VIVOCAM L2 Managed PoE Switch	24xGbE PoE + 4xGbE Combo VIVOCAM L2 Managed PoE Switch
<b>Port Configuration</b>		
Gigabit RJ45 Port	8	24
Gigabit Combo Port	2	4
Total Ports	10	28
Console Port	1	1
<b>HW Performance</b>		
Switching Bandwidth	20Gbps	56Gbps
Forwarding Capacity	14.88 Mpps	41.7Mpps
MAC Address	8K	8K
Jumbo Frames	9216 Bytes	9216 Bytes
<b>Network</b>		
IPv4/IPv6	V	V
<b>Surveillance Features</b>		
Network Device	up to 256 pcs	up to 256 pcs
PoE Reboot	V	V
Surveillance Device Management List	V	V
DHCP Server Function	V	V
VIVOTEK Device Account/Password Setting	V	V
VIVOTEK Device Grouping Setting for VLAN	V	V
VIVOTEK Device Name Edit	V	V
VIVOTEK Camera/Video Server Reboot/Restore Default	V	V
VIVOTEK Device Re-direct Link	V	V
VIVOTEK Device On/Off Line Status	V	V
<b>E-Map View</b>		
Topology View	V	V
Floor View	V	V
Google Map View	V	V
<b>Maintenance</b>		
VIVOTEK Camera/Video Server Configuration File Export/Import	V	V
Floor Image Management	V	V
Export Surveillance Management Device List	V	V
Cable Diagnostics	V	V
Traffic Monitoring	V	V



# Technical Specifications

## L2 Managed Features

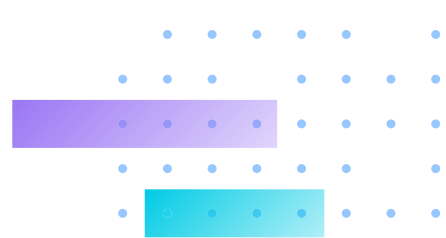
Spanning Tree	IEEE802.1D (STP)	V	V
	IEEE802.1w (RSTP)	V	V
	IEEE802.1s (MSTP)	V	V
Trunking	IEEE802.1d (LACP)	V	V
	Static Aggregation	V	V
VLAN	802.1Q Tag-based VLAN	4096 VLAN IDs	4096 VLAN IDs
	Port-based VLAN	V	V
	Private VLAN Edge (PVE)	V	V
	GARP VLAN	V	V
	Q-in-Q (Double Tag)	V	V
	Protocol-based VLAN	V	V
	MAC-based VLAN	V	V
	Voice VLAN	V	V
	IP Subnet-based VLAN	V	V
	Multicast VLAN Registration (MVR)	V	V
IGMP Snooping (v1/v2)	V	V	
DHCP Relay	V	V	
MLD v1/v2 Snooping	V	V	

## QoS Features

Hardware Queues		8	8
Classification	Port Based	V	V
	802.1p	V	V
Rate Limiting	Ingress	V	V
	Egress	V	V
	Per Port	V	V
Priority Queue Scheduling	WRR	V	V
	DSCP & Class of Service	V	V

## Security

IEEE802.1x	RADIUS Authentication	V	V
	IGMP-RADIUS Based	V	V
Secure Sockets Layer (SSL)		V	V
Port Security		V	V
IP Source Guard		V	V
Storm Control		V	V
Layer 2 Isolation Private VLAN Edge (PVE)		V	V
RADIUS/TACACS+		V	V
Loop Detection		V	V
DHCP Snooping		V	V
ACLs	Up to 384 Entries	4096 VLAN IDs	4096 VLAN IDs
	Source and Destination MAC, VLAN ID or IP Address, Protocol, Port (DSCP) / IP Precedence	V	V
	TCP/ UDP Source and Destination Ports	V	V
	802.1p Priority	V	V
	ICMP Packets	V	V
	Ethernet Type	V	V
	TCP Flag	V	V



# Technical Specifications

## Management

SNMP (v1, v2c, v3)	V	V
RMON (1,2,3 & 9 groups)	V	V
DHCP Server & Client	V	V
Port Mirroring	V	V
UPnP	V	V
LLDP (IEEE802.1ab)	V	V
LLDP-MED	V	V
S-Flow	V	V
Firmware Upgrade	V	V
NTP	V	V

## PoE Management

PoE On/Off Control	V	V
PoE Alive Checking for PD	V	V
PoE Scheduling	V	V
Power Delay	V	V
Non-Stop PoE	V	V
Extended PoE Mode (up to 250m/10mbps)	V	V

## PoE Function

IEEE 802.3af/at/bt PoE Standard Compliant	V	V
Number of PoE Output Port	8	24
PoE Output Power	Port 1-6 at 30W Port 7-8 bt 90W	Port 1-20 at 30W Port 21-24 bt 90W
Total PoE Power Budget	130W	370W
PoE Pin Assignment	Port 7-8 bt: 4 pairs 1/2 (+), 3/6 (-) and 4/5 (+), 7/8 (-) Port 1-6 af/at: 2 pairs 1/2 (+), 3/6 (-)	Port 21-24 bt: 4 pairs 1/2 (+), 3/6 (-) and 4/5 (+), 7/8 (-) Port 1-20 af/at: 2 pairs 1/2 (+), 3/6 (-)

## Environmental Specifications

Operating Temperature	-10°C ~ 50°C (14°F ~ 122°F)	-10°C ~ 50°C (14°F ~ 122°F)
Storage Temperature	-20°C ~ 70°C (-4°F ~ 158°F)	-20°C ~ 70°C (-4°F ~ 158°F)
Operating Humidity	10 ~ 90% RH	10 ~ 90% RH

## Mechanical Specifications

Dimensions	220 (W) x 44 (H) x 242 (D) mm	442 (W) x 44 (H) x 211(D) mm
Weight	1.95 kg	3.2 kg

## Power Source

AC Input	100V ~ 240V	100V ~ 240V
Frequency	50 ~ 60 Hz	50 ~ 60 Hz

## Certifications

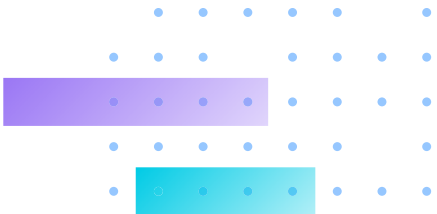
Certifications	UL, CE, UKCA, FCC, VCCI, LVD, ICES	UL, CE, UKCA, FCC, VCCI, LVD, ICES
----------------	------------------------------------	------------------------------------

## Warranty

Warranty	24 months	24 months
----------	-----------	-----------

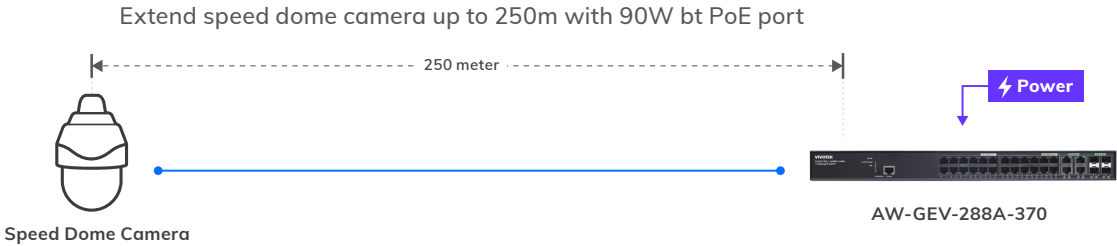
## Accessories

Included Accessories	Power Cord, QIG, CD Manual, Rack Mount Kit	Power Cord, QIG, CD Manual, Rack Mount Kit
----------------------	--	--

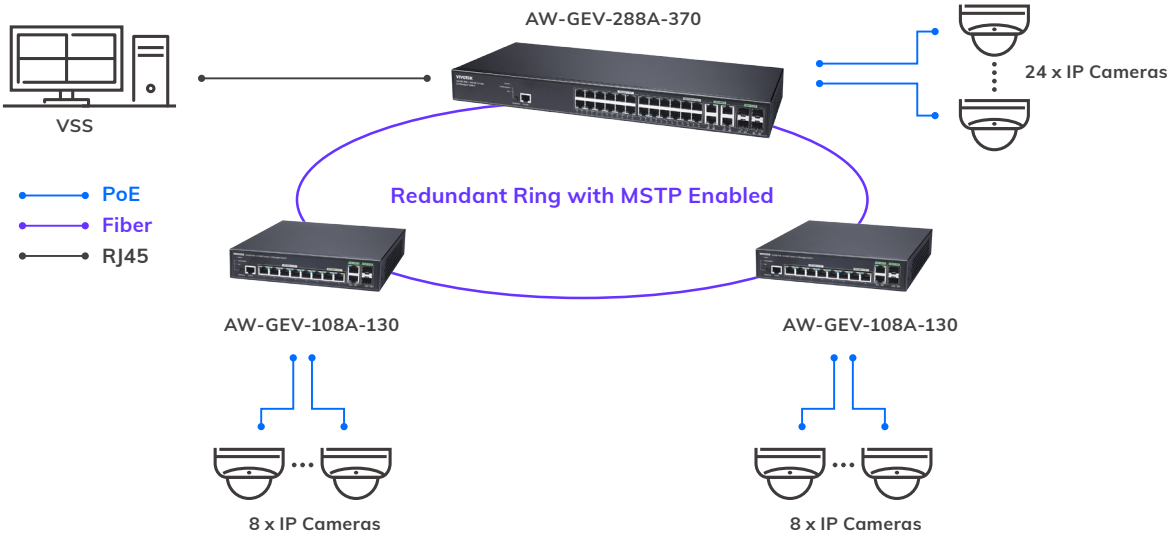


# Application

- Extend PoE with 802.3bt 90W



- Redundant Ring with MSTP Enabled



# Compatible Accessories

## SFP Transceiver



SFP-1000-MM85-X5  
1.25G, MMF, 0.5km



SFP-1000-MM13-02  
1.25G, MMF, 2km



SFP-1000-SM13-10  
1.25G, SMF, 10km



SFP-1000-SM13-40  
1.25G, SMF, 40km



SFP-1000-CPTX-X1  
1G SFP to RJ45

